

# 14. Language & Dictionary

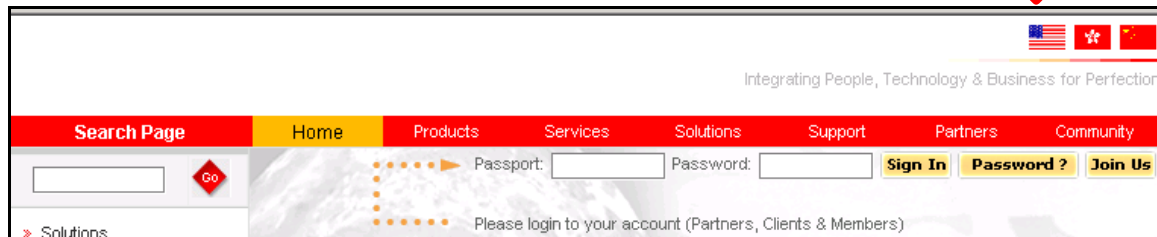
<b>DEMO</b> .....	<b>1</b>
<b>LANGUAGE BUTTON ALIGNMENT, SEPARATOR &amp; SIZE</b> .....	<b>2</b>
<b>FRONT END LANGUAGE SETTINGS</b> .....	<b>3</b>
<b>DICTIONARY</b> .....	<b>4</b>
ADD / EDIT GROUP .....	5
WORD LIST .....	6
ADD / EDIT WORD .....	7
HOW A WORD IS REFERENCED (EXAMPLE).....	8

Starts from version 2.0, all i8 platforms support all kind of languages. Each of them can mostly support up to 5 languages at the same time. The default language sets are English, Chinese simplified and Chinese traditional. If you need other language version, please go to [update.i8series.com](http://update.i8series.com) to get latest language pack.

## DEMO



Front End Language: Simplified Chinese



Front End Language: English



Front End Language: Traditional Chinese

Front end users can switch between different language using given buttons



## FRONT END LANGUAGE SETTINGS

LOC:: System Config > Site Languages

On the left hand side of the main panel, there is a list of available languages, with the top three languages being enabled and English set as the default language

Click the name of the language in the list (take English as example):

- **Enabled:** Enable or disable the language (Disabled language will not have a link displayed in the language selection widget at front end)
- **Set as default:** Default language for the system
- **Priority:** The sequence of the language selection links are displayed (Numbers)
- **Name:** Name of the language (Input all five fields to be the same)



- **Use country flag:** Use country flag as language switching link image
- **Define image:** Select and upload image of your choice



Name	Default	Enabled
English	✓	✓
繁體中文		✓
簡體中文		✓
français		
Espanish		

**Configuration for English:**

- Enabled:
- Set As Default:
- Priority: 1
- Name: English (Language 1), English (Language 2), English (Language 3), (Language 4), (Language 5)
- Use Country Flag as Language Link:  (United States)
- Define Image:  (English)

## DICTIONARY

The screenshot shows the 'i8 Control Panel - Microsoft Internet Explorer' window. The breadcrumb path is 'System Configuration > Dictionary'. The language is set to 'English'. The dictionary groups table is as follows:

#	Name	Words(s)	Code	Priority	Add Subgroup	Edit	Delete
	Preset Messages	34	preset_message	1.00	[+]	[E]	[X]
	Site		site	0.00	[+]	[E]	[X]
	CMS		cms_message	1.00	[+]	[E]	[X]
	Shopping System		shp_message	2.00	[+]	[E]	[X]
	Enquiry System		enq_message	3.00	[+]	[E]	[X]
	Forum		forum_message	4.00	[+]	[E]	[X]
	Membership System		mem	5.00	[+]	[E]	[X]
	Preset Text		preset_text	2.00	[+]	[E]	[X]
	Shopping System Text		shp_text	1.00	[+]	[E]	[X]
	User Defined	282	user_defined	3.00	[+]	[E]	[X]

### LOC:: System Config > Dictionary

Language Switch:  , display names in the list in the language selected (The image below shows the same list with Chinese selected)

#	名称	字数	编码	次序	增加子组	编辑	删除
	预设句子		preset_message	1.00	[+]	[E]	[X]
	网站	59	site	0.00	[+]	[E]	[X]
	内容管理	5	cms_message	1.00	[+]	[E]	[X]
	购物系统	85	shp_message	2.00	[+]	[E]	[X]
	查询系统	30	enq_message	3.00	[+]	[E]	[X]
	论坛		forum_message	4.00	[+]	[E]	[X]
	会员系统		mem	5.00	[+]	[E]	[X]
	预设文本		preset_text	2.00	[+]	[E]	[X]
	购物系统文本		shp_text	1.00	[+]	[E]	[X]
	用户定义	282	user_defined	3.00	[+]	[E]	[X]

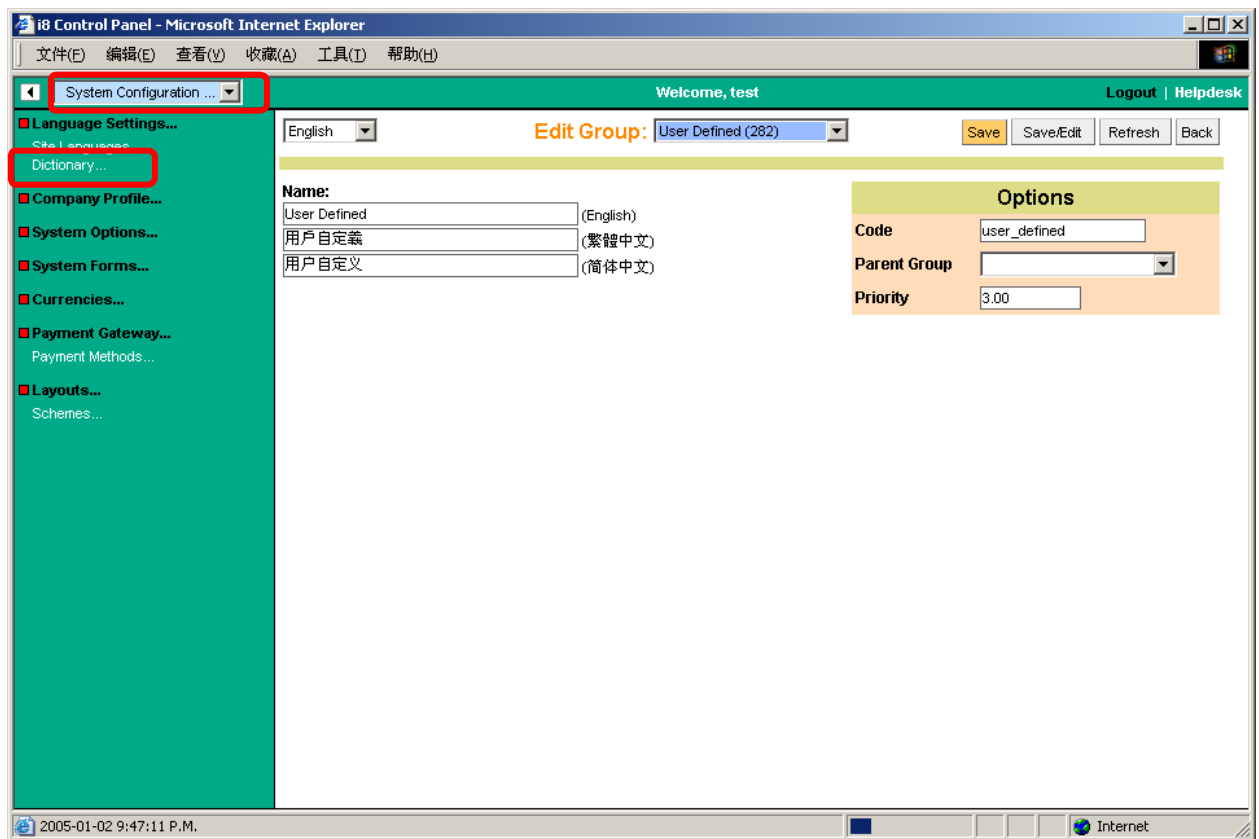
Group type: User or system groups. System groups cannot be deleted

Different systems would have different sets of dictionary words, please ask your services provider for more information about it.

On the left shows dictionary groups. You can add your own groups.

- **Name:** Name of the group (Click the name for word list)
- **Words:** Group word count
- **Code:** Code of the group
- **Priority:** Group display priority at back end
- **Add sub group:** Add sublevel group
- **Edit:** Edit group property
- **Delete:** Remove group (All words of the group will be deleted too)

## Add / Edit Group



### LOC:: System Config > Dictionary

Click "Add New Group" or "Edit group" button

- **Name:** Name of the group
- **Code:** Code of the group (Alphanumerical characters are suggested)
- **Parent group:** The parent level of the group
- **Priority:** Display priority of the group

## Word List

LOC:: System Config > Dictionary

Click group name

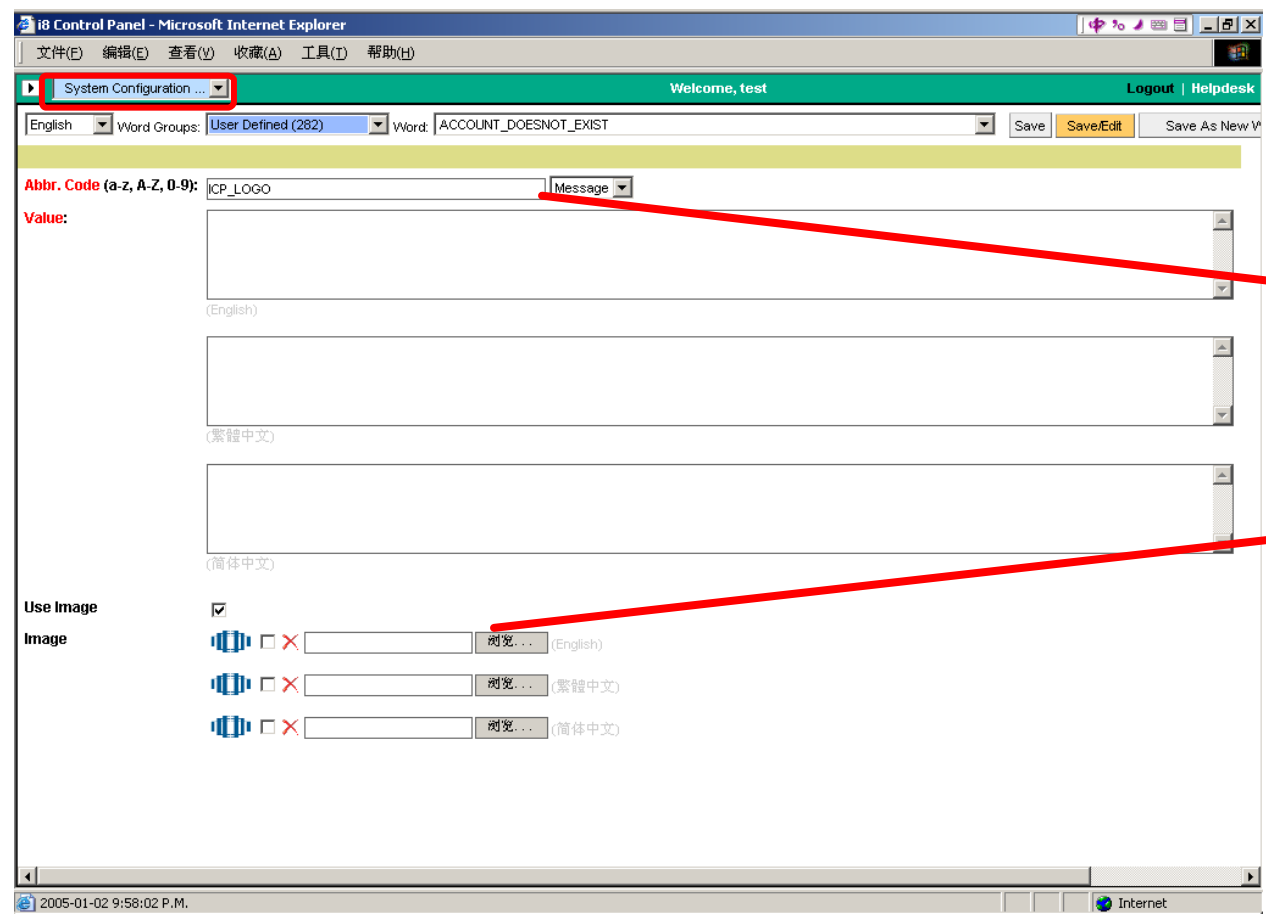
Word search box

- **Code:** Code for the word (Must be unique, you are suggested to use alphanumerical characters as word code, when the word is called in front end, use the following representations: *i8\_SYSTEM\_DICTIONARY\_WORD\_i8* or *\_\_WORD\_\_*)
- **Value:** The value of the word which is to be displayed at front end
- **Word group:** The group of the word
- **Use Image:** The word will be shown as image at front end
- **Image:** Thumbnail of the word image
- **Edit:** Edit the word
- **Delete:** Delete the word

The screenshot shows the 'i8 Control Panel - Microsoft Internet Explorer' window. The main content area is titled 'Word Groups:' and shows a list of words. A search box is located at the top right of the main area, with a red arrow pointing to it from the text 'Word search box' on the right. The search box contains the text 'Code' and 'Go' buttons. The table below shows the following data:

Code	Value	Word Groups	Use Image	Image	Edit	Delete
ACCOUNT_DOESNOT_EXIST	Account Does not Exist or Password Incorrect	User Defined	<input type="checkbox"/>			
ACCOUNT_NOT_ENABLED	Account not enabled, please re-input or contact us	User Defined	<input type="checkbox"/>			
ADD	Add	User Defined	<input type="checkbox"/>			
ADDRESS	Address	User Defined	<input type="checkbox"/>			
ADD_BARGAIN	Add Bargain	User Defined	<input type="checkbox"/>			
ADD_TO_BASKET	Add to Cart	User Defined	<input type="checkbox"/>			
ADD_TO_CART	Add to Cart	User Defined	<input checked="" type="checkbox"/>			
ADMINISTRATOR	Administrator	User Defined	<input type="checkbox"/>			
ADVANCE_SETTING	Advance Setting	User Defined	<input type="checkbox"/>			
ALIGNMENT	Alignment	User Defined	<input type="checkbox"/>			

## Add / Edit Word



### LOC:: System Config > Dictionary

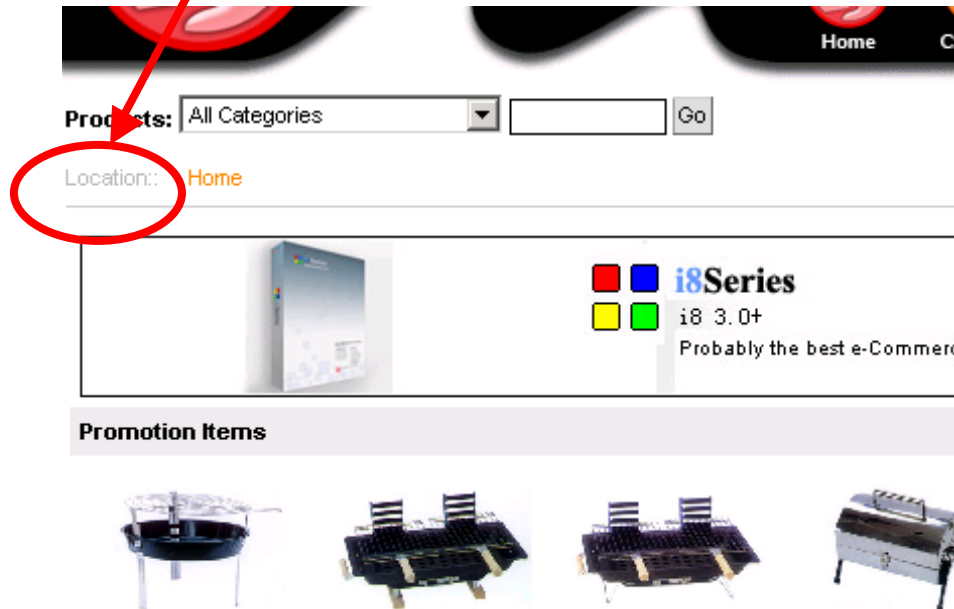
Click group name then click edit word button

- **Code**: The code for the word to be referenced
- **Type**: Is the word a short text (255 characters) word or a long text word (40000 characters)
- **Value**: Front end display value of the word
- **Use image**: Use image as word value instead of text (Upload your images accordingly)

## How a word is referenced (Example)

```
</head>
<body i8_XML_COMPONENT_BODY_i8 background="/upload/00/bg.gif" style="background-repeat: no-repeat;">
i8_SYSTEM_COMPONENT_BASE_HREF_i8
i8_SYSTEM_COMPONENT_PAGE_HEADER_i8
<table align="center" width="100%" border="0" cellpadding="10" cellspacing="3">
<tr>
<td width="5%" nowrap class="i8cssLocation0"><!-- LOCATION_i8 --></td>
<td colspan="2" style="text-align: right;"><a href="/cgi-bin/i8series_page.cgi?access_code=enquiry_session_cart" class="i8cssLinkMBO">&nbsp;  <a href="/cgi-bin/i8series_page.cgi?access_code=enquiry_session_cart" class="i8cssLinkMBO">&nbsp;  </a></td>
</tr>
<tr>
<td colspan="3" style="text-align: center;"></td>
</tr>
<tr>
<td align="right" valign="middle"></td><td colspan="2">i8_SYSTEM_COMPONENT_SUBF
```

HTML Code



Front-end effect